

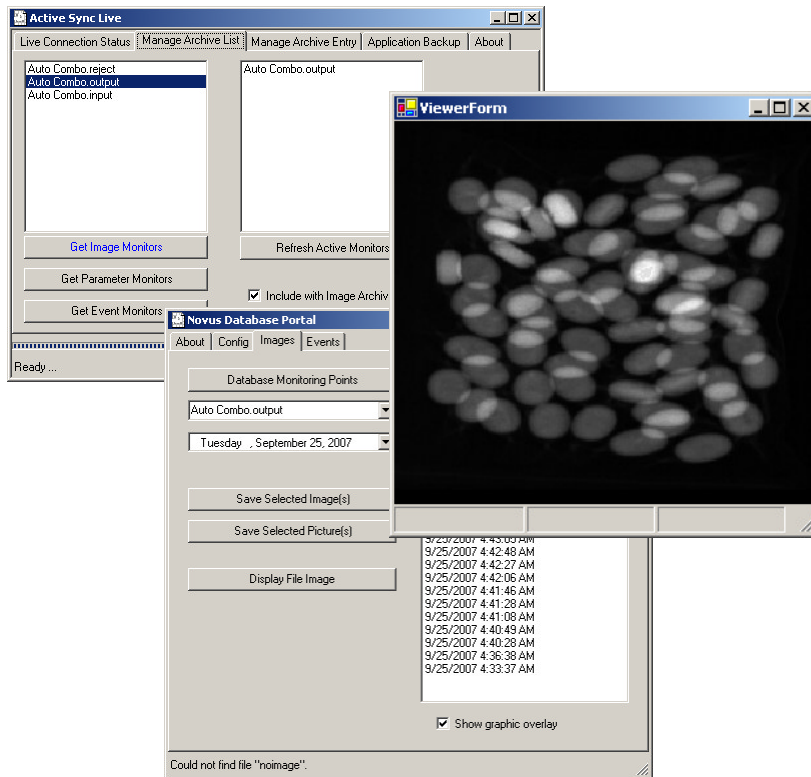
Remote Portal™

Remote Support & Data Reporting System

Remote Portal™ is an add-on module that resides between the C3 X-ray inspection machine and your Internet enabled factory LAN to give a remote view of the inspection throughput statistics and to archive images. The **Remote Portal™** also facilitates remote service and upgrade capabilities.

Novus X-Ray's C3 machines inherently support real-time audits of your product inspection results. The **Remote Portal™** provides this audit function by constantly recording the statistical data and associated images to a non-volatile storage device. It parses all throughput statistics to create an easy to use and understandable database using the all-familiar hypertext web interface or a Windows based report generator program.

Browse your user-friendly report for the results of interest. Click on a time stamped result to view the product X-ray image. No more guessing why a product is sitting in the reject bin. **Remote Portal™** provides almost unlimited history and thousands of archive images that tell the whole story.



Remote Portal™ also provides a very effective way for Novus X-Ray support engineers to remotely, and in real-time, help you optimize quality throughput. This may be a simple software upgrade to enable the latest innovation or a complete installation for your latest product.

With **Remote Portal™** the support engineer can retrieve your image archive and/or live images, make the appropriate enhancements to your inspection criteria, and upload the changes while your machine is still inspecting product.

This capability, commonly called "Hot Patching", enables real time optimization without the need to stop production thus resulting in zero down time!

There are a number of remote programs available for the Remote Portal. These are the Active sync and database tools used to archive information from the x-ray machine.



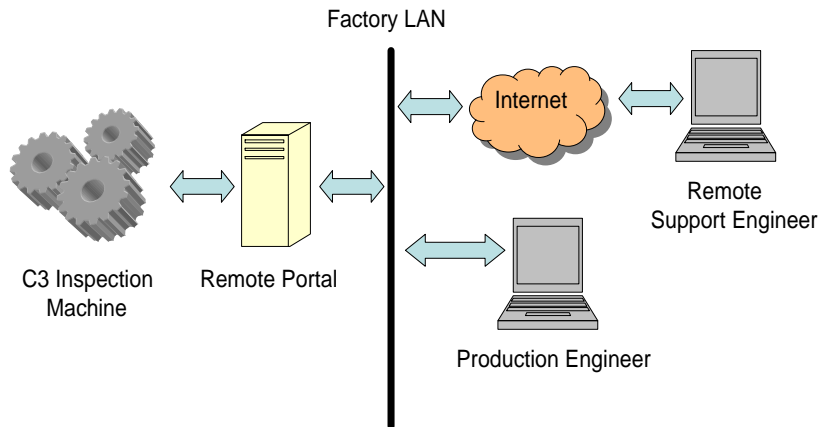
Remote Portal

Technical Information

Firewall Friendly

Remote Portal™ is a unique Web-based technology that works with your existing firewall and Internet infrastructure. You do not have to change or open ports, configure IP addresses or deploy any hardware or software. You simply use your existing corporate Internet connection.

The **Remote Portal™** module initiates an outgoing connection, and as such does not compromise the integrity of your existing firewall. It simply looks like any other office computer with web access!



Remote Portal™ supports the latest computer networking technologies such as Domain Namespace Server (DNS) and Dynamic Host Configuration Protocol (DHCP). Remote Portal does not introduce any new security concerns. Other approaches require the opening of non-http ports on their firewalls, the ability to allow in-bound channels, and/or direct access to the Internet as opposed to the normal proxy server.

Specifications

Networking

Dual Headed, one for the x-ray machine, the other for the plants LAN
DNS Enabled, DHCP Enabled
Ethernet 10/100 Mb/sec

Power

Input Voltage
Frequency
Power

90/264 VAC
47 to 63Hz
< 40Watts, no cooling fan required. Suitable for continuous duty

Size

8.7" x 2.6" x 5.8" (220mm x 65mm x 147mm)

Environment

Operating Temperature
Storage Temperature
Relative Humidity

0 to 45C (32 to 113F)
-20 to 75C (-4 to 167F)
5 to 90% @ 40C non-condensing

Image Archive

Total Size
Queue

> 1000 (500Kb image), limited only by hard disk size
FIFO roll-over

Novus X-Ray LLC
243 N. Union Street
Suite 130
Lambertville, NJ 08530

Tel. 215.962.3171
Fax 609.249.5124
Email sales@novusxray.com
Web www.novusxray.com

