

# Novus X-Ray LLC

Increasing Quality through X-Ray Technology

## Hyper-Switch™ "Pinched In Seal" Application

**Hyper-Switch™** automatically inspects closed packages for product defects and unwanted contamination. Packages can be cardboard, plastic, foil lid or pouch and even metal!

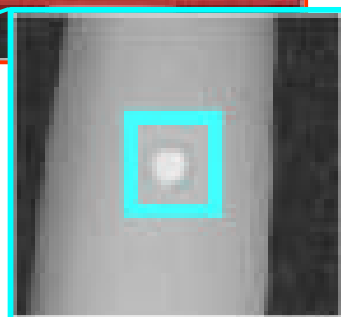
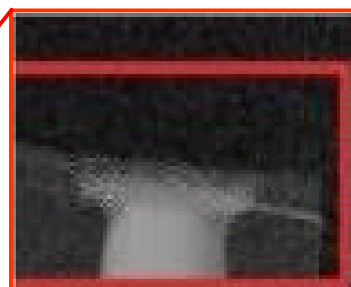
Below is an example of a typical application requiring contaminant and seal integrity detection.



Novus uses X-Ray technology to see through the products container ...



Is this pouch a quality threat?



and automatically reject products that do not meet your quality criteria.

**Hyper-Switch™** continuously combs through each image, searching for unwanted objects of metal, glass, stone and other materials that absorb small amounts x-ray energy. In addition, the image has rules pertaining to different areas. In this case, there should be no product showing absorption within the designated seal length at the end of the package. This inspection can be accomplished at belt speeds as fast as 200 ft./min. That translates into 3+ pouches per second!

In this case, a 1.0 millimeter piece of glass and a significant amount of pinched-in-seal product were found. The pouch was automatically removed from the conveyor belt, eliminating the quality and liability hazard.

This application can also simultaneously check-weight the product if desired.

© Novus X-Ray LLC 2004